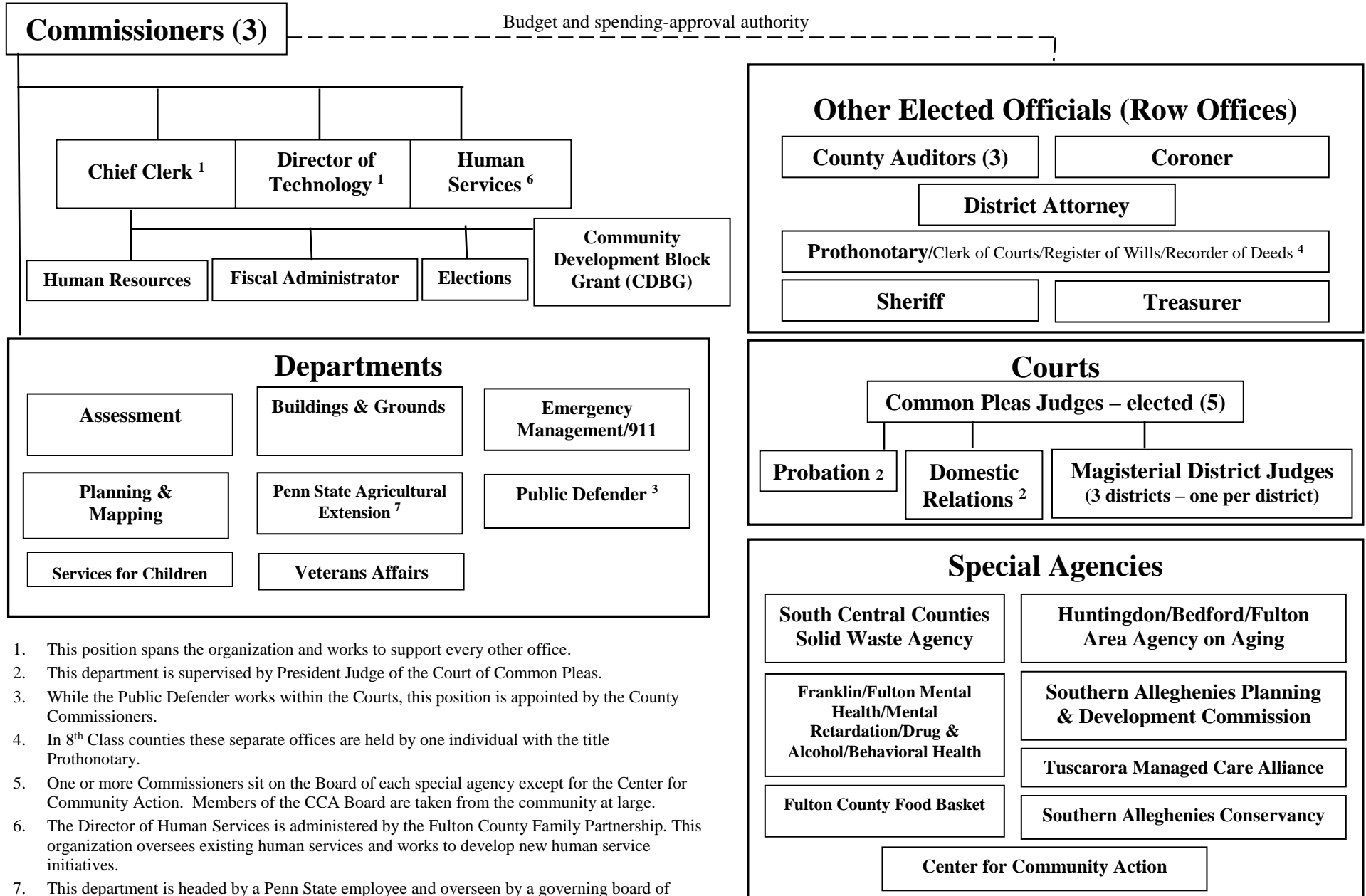


Fulton County, Pennsylvania Government Organizational Chart

Updated: January 9, 2018



1. This position spans the organization and works to support every other office.
2. This department is supervised by President Judge of the Court of Common Pleas.
3. While the Public Defender works within the Courts, this position is appointed by the County Commissioners.
4. In 8th Class counties these separate offices are held by one individual with the title Prothonotary.
5. One or more Commissioners sit on the Board of each special agency except for the Center for Community Action. Members of the CCA Board are taken from the community at large.
6. The Director of Human Services is administered by the Fulton County Family Partnership. This organization oversees existing human services and works to develop new human service initiatives.
7. This department is headed by a Penn State employee and overseen by a governing board of community members.