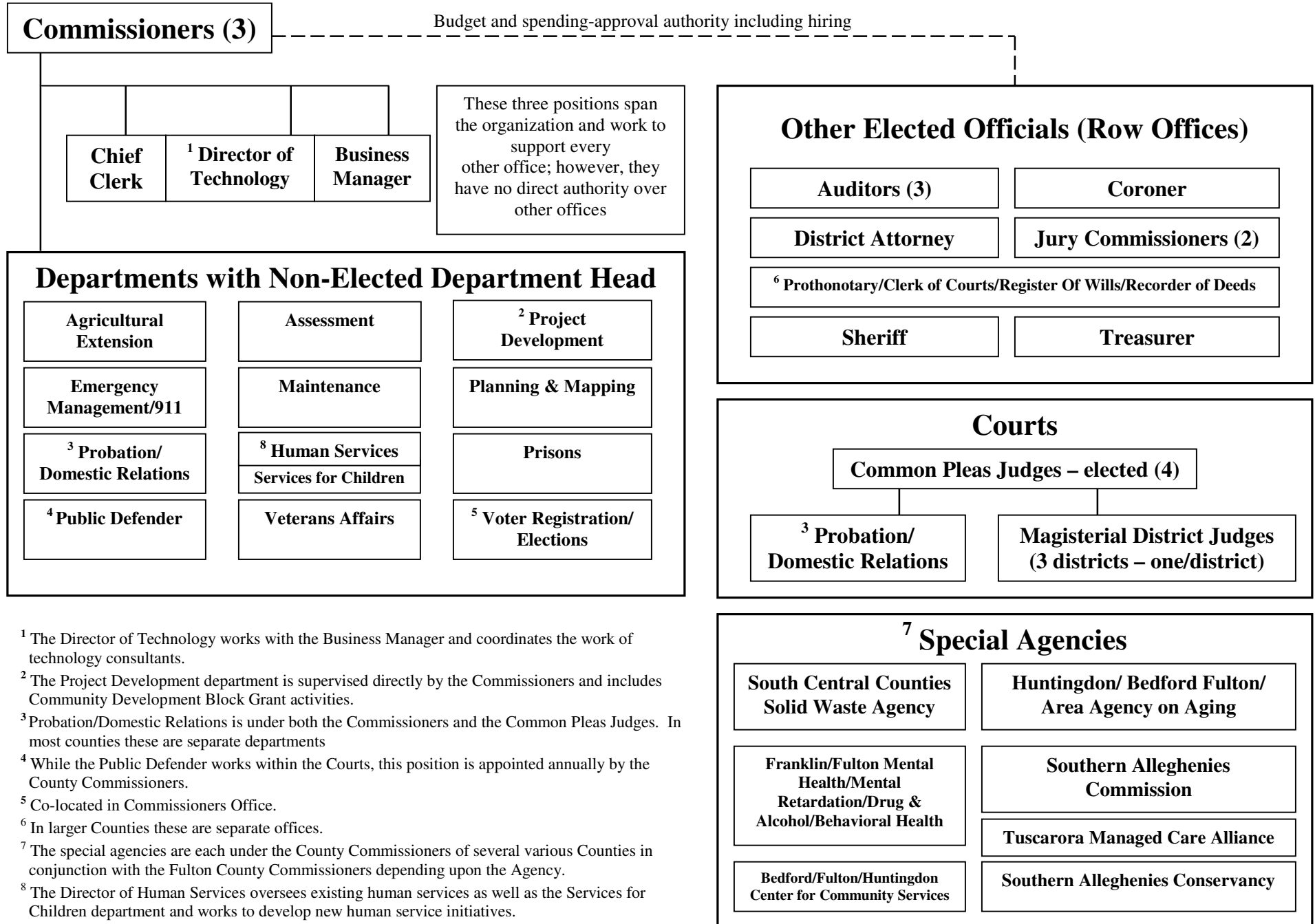


# Fulton County Government Organizational Chart



<sup>1</sup> The Director of Technology works with the Business Manager and coordinates the work of technology consultants.

<sup>2</sup> The Project Development department is supervised directly by the Commissioners and includes Community Development Block Grant activities.

<sup>3</sup> Probation/Domestic Relations is under both the Commissioners and the Common Pleas Judges. In most counties these are separate departments

<sup>4</sup> While the Public Defender works within the Courts, this position is appointed annually by the County Commissioners.

<sup>5</sup> Co-located in Commissioners Office.

<sup>6</sup> In larger Counties these are separate offices.

<sup>7</sup> The special agencies are each under the County Commissioners of several various Counties in conjunction with the Fulton County Commissioners depending upon the Agency.

<sup>8</sup> The Director of Human Services oversees existing human services as well as the Services for Children department and works to develop new human service initiatives.